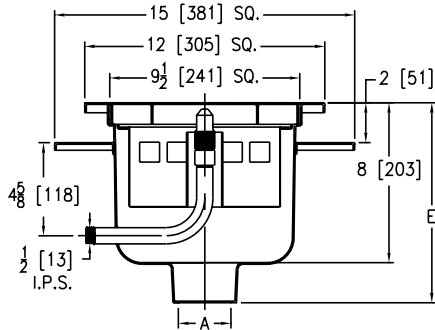


## Z1982 12" X 12" STAINLESS STEEL SANI-FLOR CAN WASH DRAIN WITH 8" SUMP DEPTH



### ENGINEERING SPECIFICATION

Zurn Z1982 Sani-Flor can wash drain features 12" x 12" x 8" deep fabricated stainless steel body, bottom outlet, anchor pan, medium-duty, loose set grate, and standing sediment bucket. Comes complete with chrome-plated bronze spray nozzle and water supply assembly.



PREFIXES	DESCRIPTION	A PIPE SIZE	LIST PRICE
Z1982*	All Type 304 Stainless Steel	3", 4"	4,244.00
OUTLETS (SPECIFY PIPE SIZE IN INCHES AND TYPE OF OUTLET)			
OUTLET TYPE	PIPE SIZE/OUTLET TYPE		ADD
NH	No-Hub	3NH, 4NH	N/C
SUFFIXES			
			ADD
-C	Clamp Collar		185.00
-WB	Water Supply Control Box (See Z1464)		5,330.00
-11	Vandal-Proof Secured Grate		633.00
-31	Stainless Steel Mesh Liner for Bucket		472.00
BEST SELLERS			LIST PRICE
Z1982-3NH			4,244.00
Z1982-3NH-WB-31			10,046.00
Z1982-3NL-31			4,716.00

Dimensions in inches [mm]		Approximate Weight lb [kg]	Grate Open Area sq in [cm <sup>2</sup> ]
A Pipe Size/Outlet Type	E Body Height Dimensions		
No-Hub (NH)			
3NH, 4NH	10 [254]	45 [20]	20 [129]

## Z1995 24" X 16" A.R.C. SANI-FLOR RECEPTOR WITH 17" SUMP DEPTH

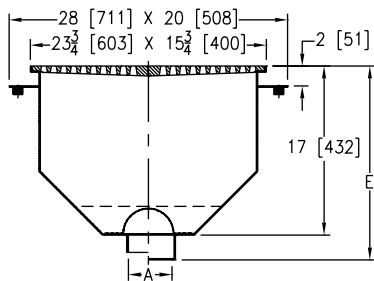


### ENGINEERING SPECIFICATION

Zurn Z1995 Sani-Flor receptor features 24" x 16" x 17" deep, white acid resisting epoxy coated interior, fabricated steel body, integral anchor flange, and rectangular square holed, heavy-duty grate - complete with stainless steel anti-splash interior bottom dome strainer.

### NOTE

†Add 3/8" to 15-3/4" x 23-3/4" and 3/16" to 'E' dimensions when specifying ZN1995.



PREFIXES	DESCRIPTION	A PIPE SIZE	Z (A.R.C.)	ZN (N.B.)
Z1995*	Fabricated Steel Body with White A.R.C. Interior	3", 4", 6"	9,473.00	-
ZN1995†	Fabricated Steel Body with White A.R.C. Interior, 16-1/8" x 24-1/8" N.B. Frame and Full Grate with 1/4" Square Openings	3", 4", 6"	-	12,122.00
OUTLETS (SPECIFY PIPE SIZE IN INCHES AND TYPE OF OUTLET)				
OUTLET TYPE	PIPE SIZE/OUTLET TYPE		ADD	
NH	No-Hub	3NH, 4NH, 6 NH	N/C	N/C
SUFFIXES				
			Z (A.R.C.)	ZN (N.B.)
-KC	Anchor Flange with Seepage Holes and Clamp Collar		561.00	561.00
-P	1/2" Trap Primer Connection (See Z1023)		380.00	380.00
-2	1/2 Grate		N/C	N/C
-3	3/4 Grate		N/C	N/C
-6	Grate with 6" Dia. x 6" High Funnel		488.00	626.00
-25	White A.R.C. Bucket		1,199.00	1,199.00
BEST SELLER			LIST PRICE	
Z1995-4NH			9,473.00	

Dimensions in inches [mm]		Approximate Weight lb [kg]	Grate Open Area sq in [cm <sup>2</sup> ]
A Pipe Size/Outlet Type	E Body Height Dimensions		
No-Hub (NH)			
3NH, 4NH, 6NH	18-3/4 [476]	19 [483]	70 [452]

Supplied By:



877-903-7246

www.commercialplumbingsupply.com

For additional product information, please visit [www.zurn.com](http://www.zurn.com)

\*Regularly furnished unless otherwise specified.

Items designated as Best Sellers are most specified and are generally in stock for shipment.

Ⓢ This symbol denotes a product that is engineered to reduce installation and rework time.